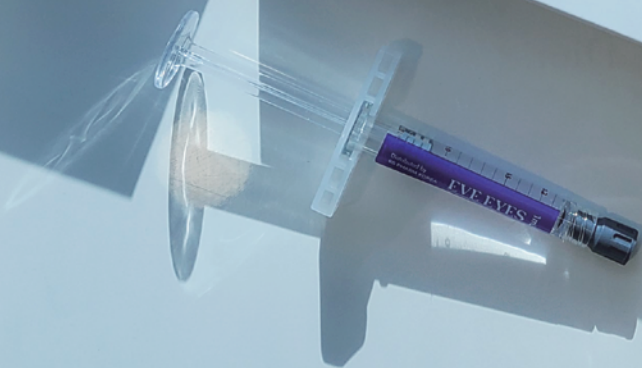




# EVE SERIES

INJECTABLE RESTORATIVE



EVE SERIES

# EVE EYES

---

Regenerate Your Cells, Rejuvenate Your Skin, Reverse Your Age.

EVE EYES is a cell regenerating DNA treatment derived from salmon that repairs damaged and aging skin. EVE EYES is injected directly into the epidermis, effectively restoring and revitalizing the skin.



## EVE EYES main ingredient



Salmon milt



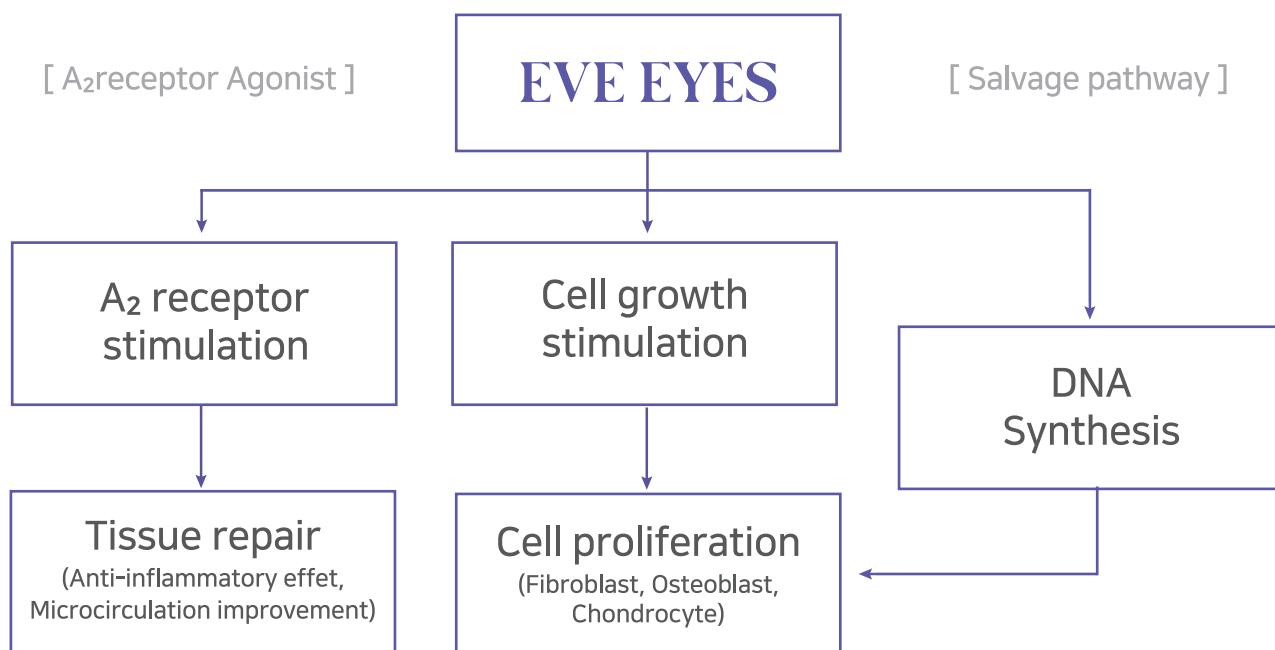
Purified DNA(PN)



EVE EYES



## EVE EYES mechanism of action



**Skin Tissue Regeneration & Wound Healing**

## EVE EYES Effects

EVE EYES induces tissue regeneration and enhances the self-healing properties of damaged skin cells, from the epidermis all the way through to the deep dermis for a long lasting effect. As a result, the skin's protective barrier is strengthened, providing the skin with elasticity, firmness and a natural healthy glow.



## Before & After

Intensive treatment gives your skin brightness and glow.

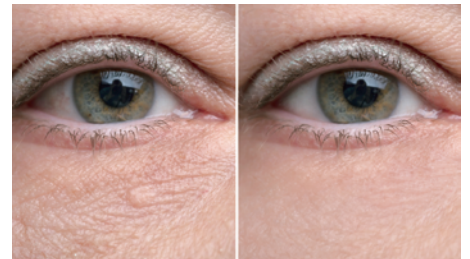
### • Dark circles



### • Anti-wrinkle



### • Anti-aging



# Non-Clinical study

The results obtained from animal testing indicate that EVE EYES is effective in treating wounded skin.

- Angiogenesis effects on wound

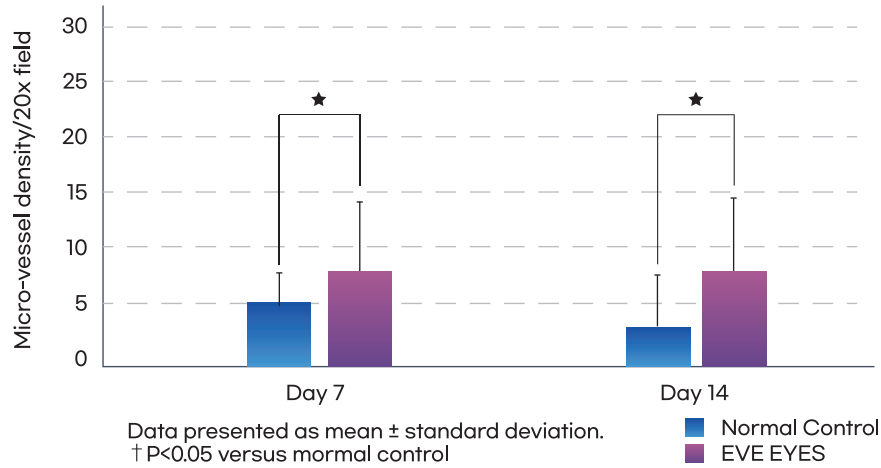


Figure1. Quantitative date of microvessel density (MVD) obtained from platelet-endothelial cell adhesion molecule-1 immunostaining of skin wound specimens

- Wound healing effects

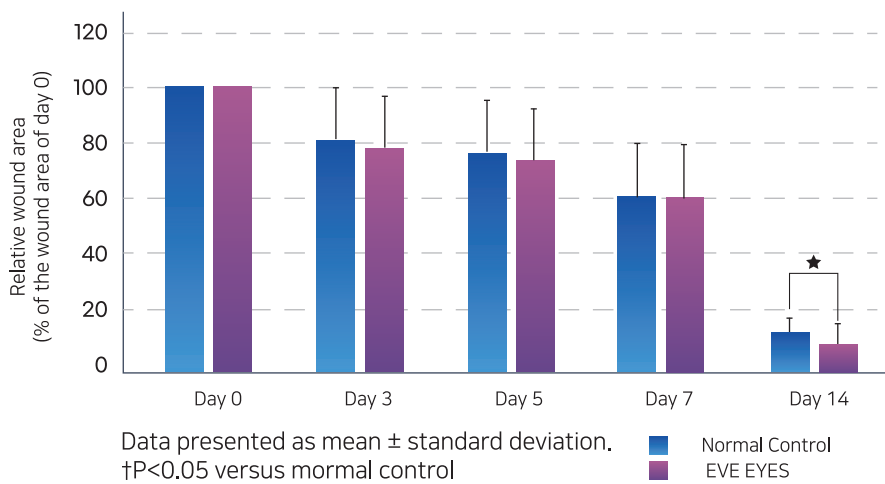


Figure2. Wound area

- Angiogenesis effects in a rat model of Hind limb ischemia.

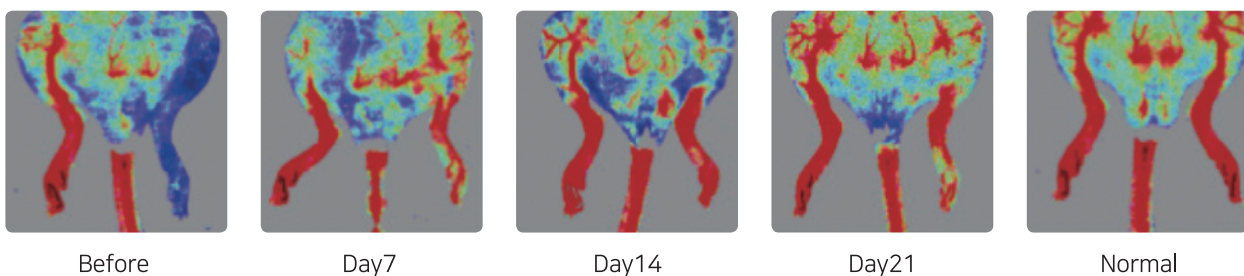


Figure3. Blood flow images (Day 21)

## Production details

- EVE EYES (Sodium Polynucleotide 2mg/ml) -1ml

## Treatment process

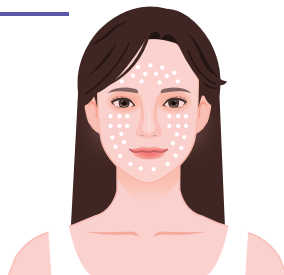
EVE EYES effects are maximized when 3 to 4 sessions are performed in 2 to 3 week intervals

- After 3 to 5 days of treatment, the skin will feel soft and revitalized.
- After 2 to 4 weeks of treatment, there will be visible improvement of skin elasticity and fine wrinkles.
- After 4 to 6 weeks of treatment, the lifting and volume enhancing effects will become noticeable.

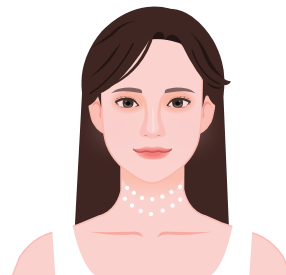
## Recommended use

When EVE EYES is used in conjunction with Hyaluronic Acid filler for skin hydration or 'Nefer TITI solution (Functional cosmetic for brightening effect and reducing facial wrinkles)' It will boost the overall effectiveness of the product.

## Treatment areas



[Facial fine lines]



[Neck wrinkles]



[Back of one's hand]

## Precautions

- Do not use on infected wounds (such as wounds with redness, pus, warmth, swelling, etc).
- Suspend use immediately if you experience a rash, fever, allergic reactions, or symptoms of an infection while using the product, and consult your doctor or pharmacist for the most appropriate treatment.
- Use according to your doctor's instructions if you are hypersensitive to polynucleotide.
- Do not overuse.
- If you are pregnant or breastfeeding, or if you suspect or are planning to become pregnant, consult your doctor or pharmacist before use.

# EVE SERIES

EVE TOX & EVE EYES & EVE-LIFT



## EVE TOX

Botulinum Toxin Type A



## EVE EYES

1Pre-filled syringe



## EVE-LIFT

Lifting Thread

A global leader  
in the biotech industry



**EVE SERIES**

**BS PHARM KOREA CO., Ltd**

Twentyfirstvalley 1008, 157, Yangpyeong-ro, Yeongdengpo-gu, Seoul, Republic of Korea  
Seoul: +82-2-511-7185 E-mail: bsp-korea@naver.com

<http://www.bsp-korea.com>